



Dyneema® vs. Polyester Comparison



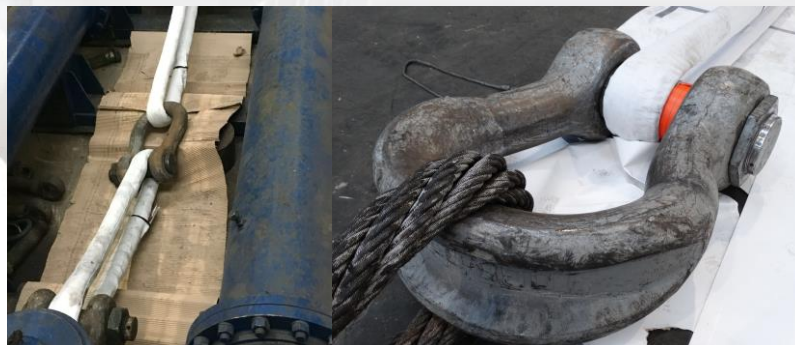
EXTREEMA® Roundslings



Polyester Round slings



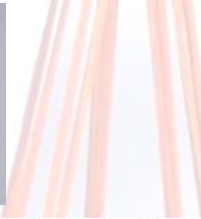
Core raw material:	100% Dyneema®	100% Polyester
Cover material:	100% Dyneema®(optional Cordura®)	100% Polyester
Certificate of EU-Preferential Origin.	✓ Dyneema® confirmed	✗ Polyester raw material (yarn) is primarily produced in China.
Tensile strength	Dyneema® is 15 times stronger than steel.	Polyester is 2 times stronger than steel
D:d ratio	1:1 for Extreema® round slings	approx. D/d 1:2 small WLL / D/d 1:3 high WLL
Diameter of sling (example: 100ton)	100% (core diameter: approx 3.5")	approx. 1.5 x larger than Extreema® (core diameter approx 5.3")
Max/Min Temperature	158-176°F. depending on cover and application) Min.-58 degrees°F	Max. 100 degrees °C. Min.-40 degrees °C.
Water absorption	Dyneema® does not take up water.	Polyester takes up water.
Melting point	Appr. 302°F	Appr. 250 degrees °C.
Elongation at WLL	less than 1%	3 % to 5%
Elongation at break	≈ 3.5%	≈ 8 to 10%
Weight	<ul style="list-style-type: none"> • Extreema® slings float on water. • 100% 	<ul style="list-style-type: none"> • Polyester slings sink in water due to own weight. • 250% PES is 2.4 to 3 times heavier compared with Extreema®
Puncture resistance (see diagram enclosed)	✓ very good, proven by testing.	✗ poor, according to puncture tests on sleeve/cover.
Abrasion resistance (see diagram enclosed)	✓ very good, proven by testing.	✓ good, proven by testing.
Cut resistance (see diagram enclosed)	✓ very good, proven by testing.	✗ poor, according to cutting tests, a polyester sleeve is susceptible to sharp objects and will damage.



D:d ratio between Extreema® round sling and shackle/pin = 1:1.



Dyneema® vs. Polyester Comparison



Weights

EWL = 5m	Extreema®	Polyester	Steel Grommet
WLL	Weight(kg)		
40	17	40	79
50	21	56	99
75	32	86	149
100	47	111	177
125	63	140	241
150	78	170	276
200	107	223	355

copyright © by LIFT-TEX® Industrie b.v.

EXTREEMA®

Diameter at WLL

	Steel Grommet	Extreema®	Polyester
WLL	ø in mm		
40	48	50	98
50	54	60	119
75	66	75	140
100	72	100	155
125	84	125	197
150	90	140	222
200	102	170	260

Above mentioned information is subject to changes as a result of continuous product developments. No rights can be claimed from them.